



**FLUKE®**

Reliability

---

## Get more value from your CMMS – Part II: Integrations for improving machine health

---

Michael Mills

**Accelix™**  
Webinar Series

## Meet the speaker



### Michael Mills

*Sr. Solutions Engineer, Fluke Reliability*

- 7 years in CMMS leveraging best-of-breed solutions and best practices.
- Experience ranging across roles such as Customer Success Manager, Solutions Engineer, and SME on integrated systems and providing solutions for Workplace Safety, Packaging, Life Sciences, Manufacturing, Public Sector, and Utilities.
- Certified Reliability Leader – 2018

## Part II: Integrations for improving machine health



Mike Ciocys is the Prüftechnik U.S. Technical Service and Support Manager for Fluke Reliability. His Prüftechnik career began during his college years in 2009 as a member of its co-op program. After time as a Senior Alignment Engineer and an Application Engineer, he was promoted to his current role in 2016. He launched the Technical Support department in 2016 and continues to manage it. Ciocys obtained his CAT III Vibration Analyst certification in 2019 and his Certified Reliability Leader certificate in 2016. He holds a bachelor's degree in Mechanical Engineering from Temple University.



Brian Harrison is the Industry IIoT Lead for Fluke Reliability. He has more than 10 years of experience in enterprise asset management, applying best-of-breed solutions and current industry leading practices. He has worked on enterprise projects across industries, including the public sector, manufacturing, and aviation. Deploying a blend of EAM, Mobile, and IIoT solutions, he has delivered high-value projects leveraging reliability centered maintenance (RCM) in support of ISO55001, CBM, and ICM.

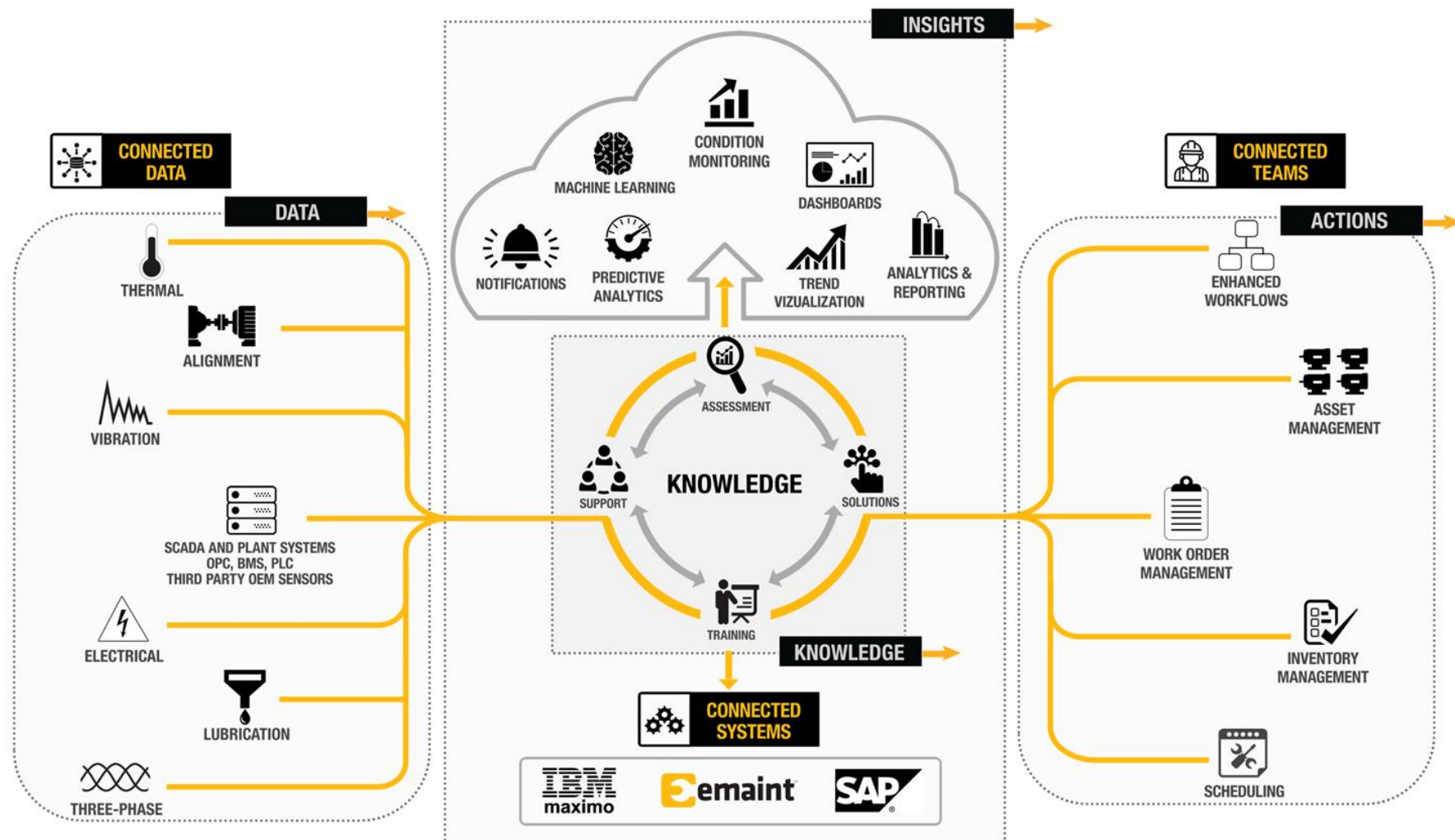


Jeremy Guo is a Solutions Engineer with Fluke Reliability. He joined Fluke in 2017, specializing in software management system and condition monitoring tools. He has worked closely with Fluke Reliability's electrical and vibration tools and sensors teams and the software management teams, participated in several internal startup and innovation teams, and holds nearly a decade of experience in the software management space.





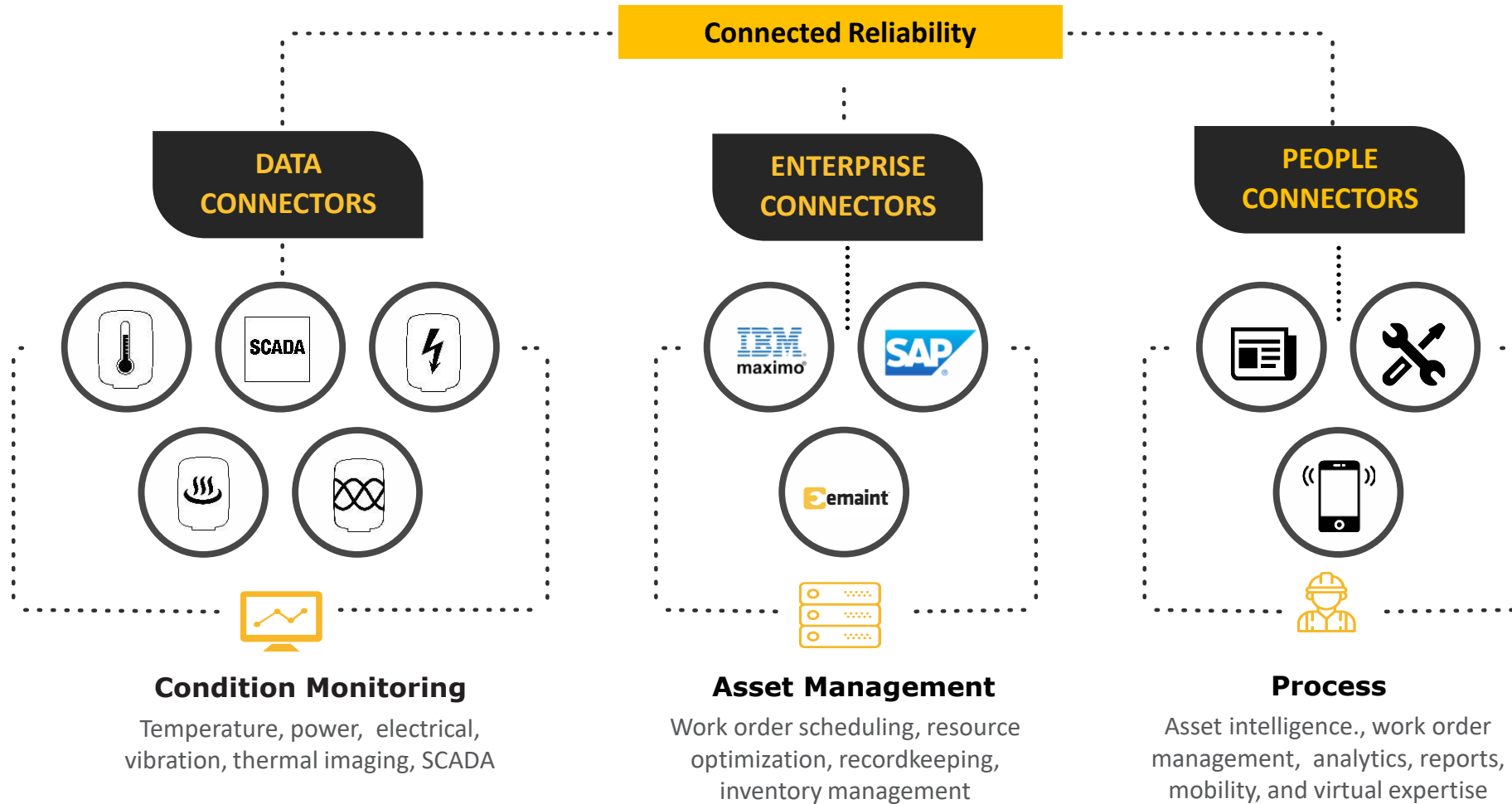
# Connected Reliability ecosystem



*Enabling the Right Actions on the Right Assets at the Right Time*

# Evolution CBM solutions

Data + Connectivity + Action = Reliability

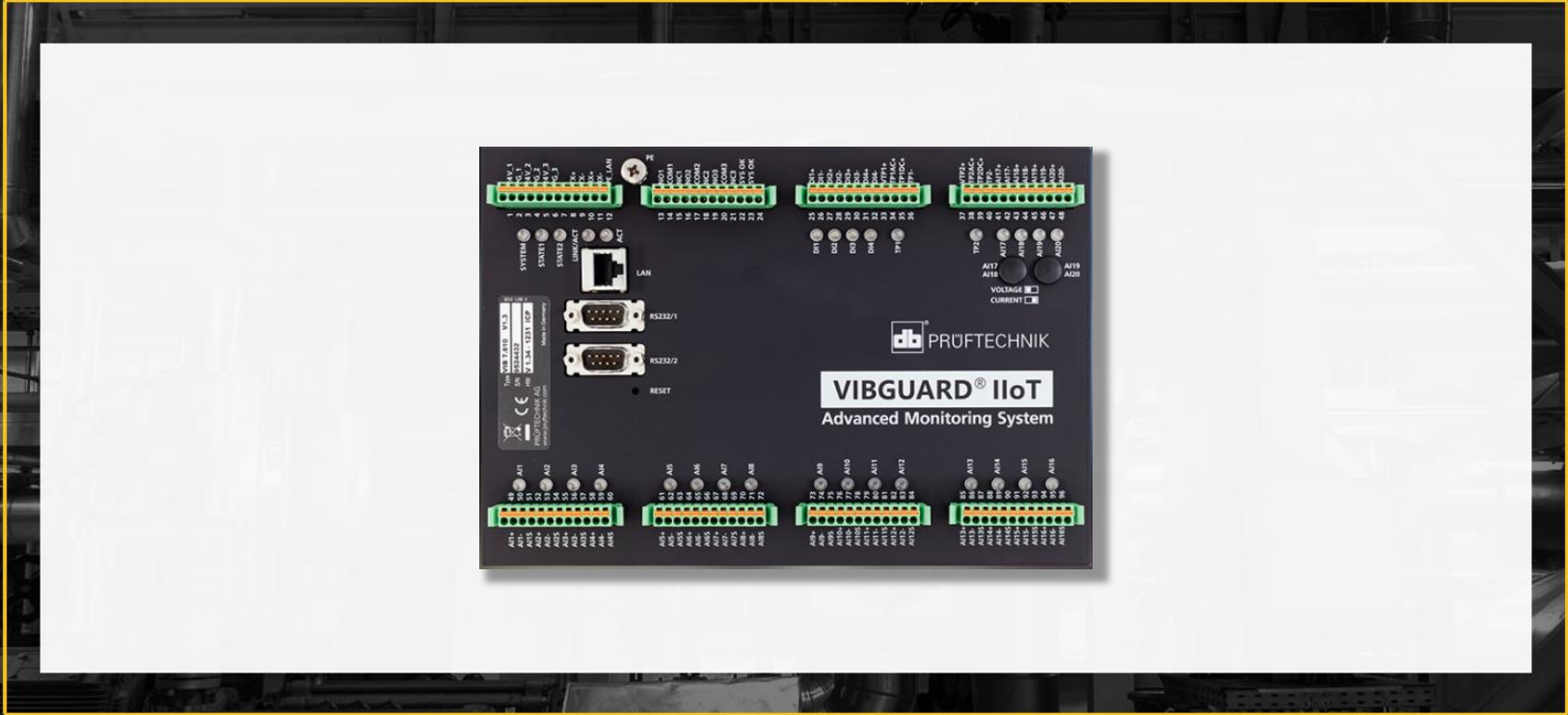


## POLL QUESTION No. 1



**How important are CMMS integrations to your maintenance processes?**  
(Click only one answer)

- Very important; we already integrate one or more solutions
- Important; our integration planning is underway
- Interested in learning more
- Not important
- Not sure



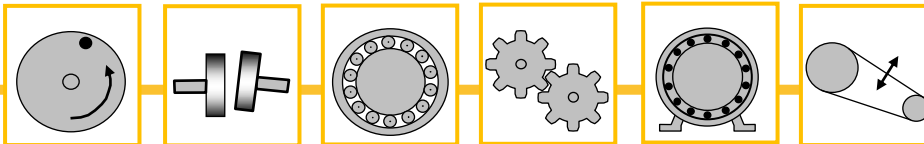


# VibGuard: Online condition monitoring



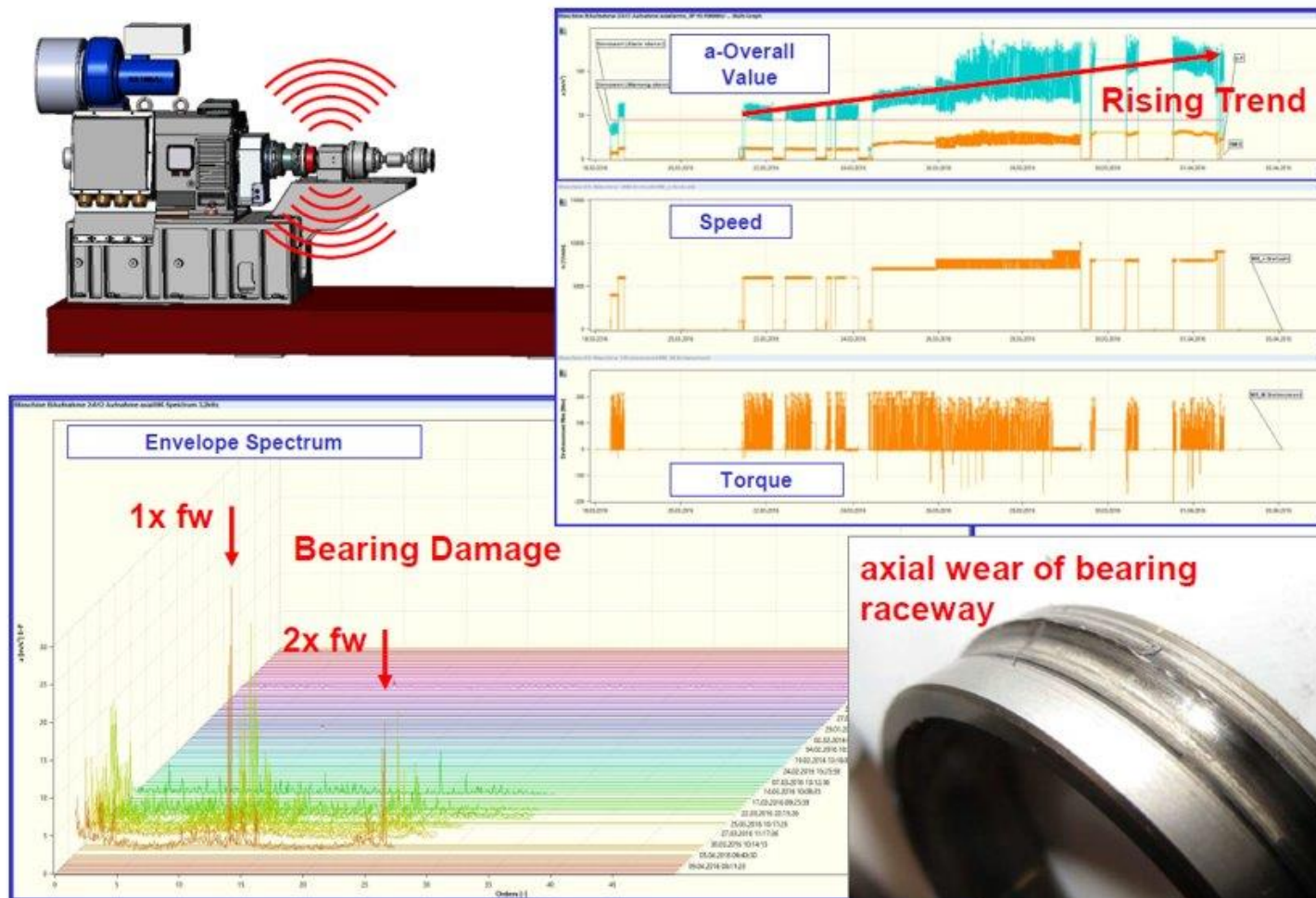
**Online Condition Monitoring is crucial for:**

- High-value
- Non-redundant
- Complex
- Mission-critical assets





# Online system capabilities



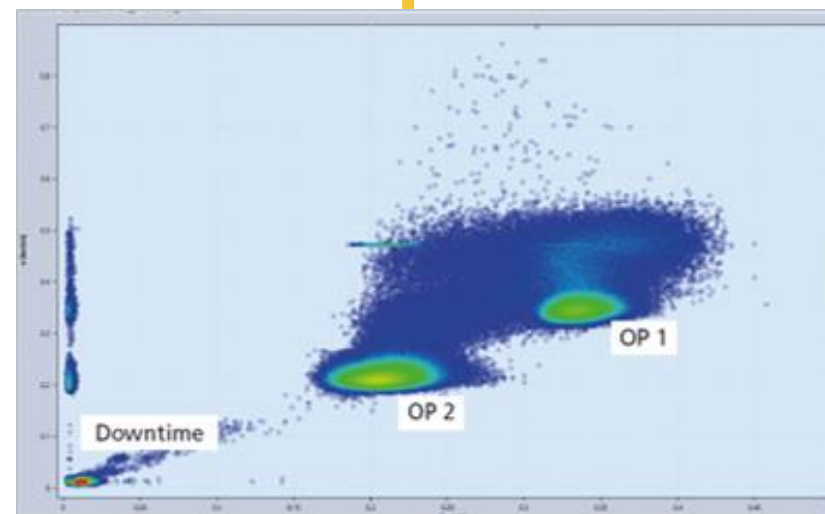
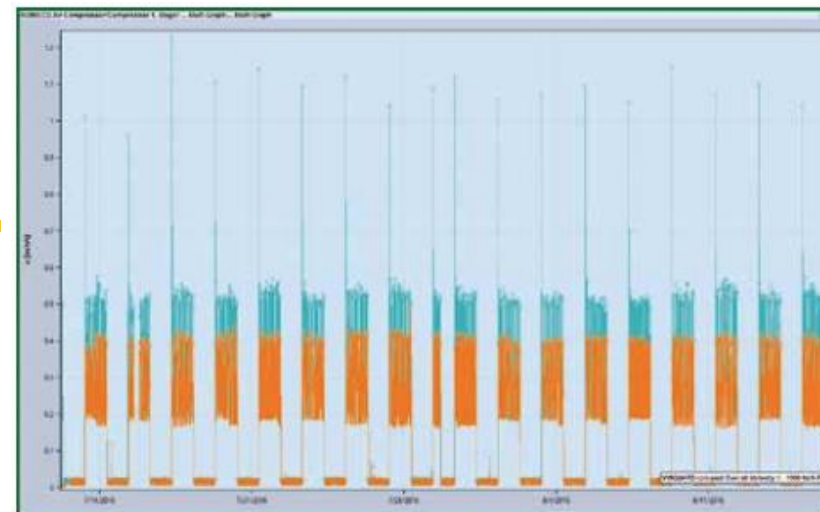
- Level 1 – Trend Data
- Speed
- Torque / Load
- Level 2 – Spectral Data



## Examples:

- Speed
- Temperature
- Current, voltage
- Load / unload
- Pressure
- Fluid level
- Process stage
- Valve position
- Price

# Diversified data

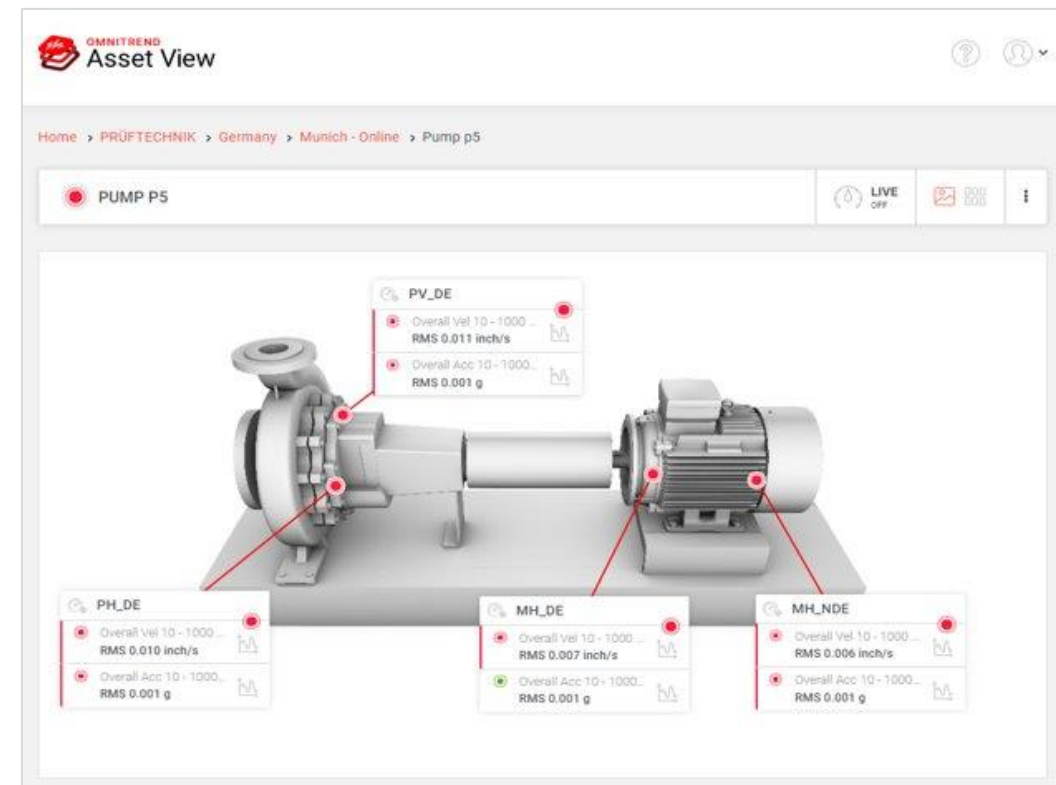
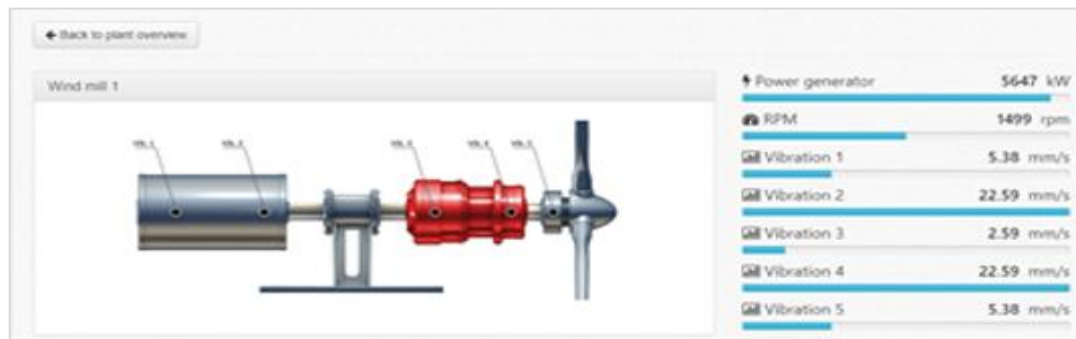
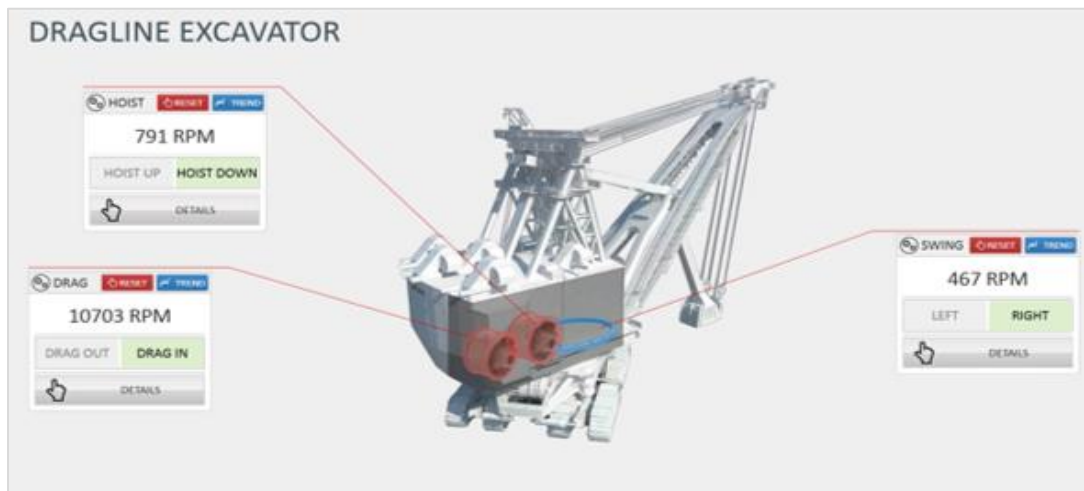


PLC

100%



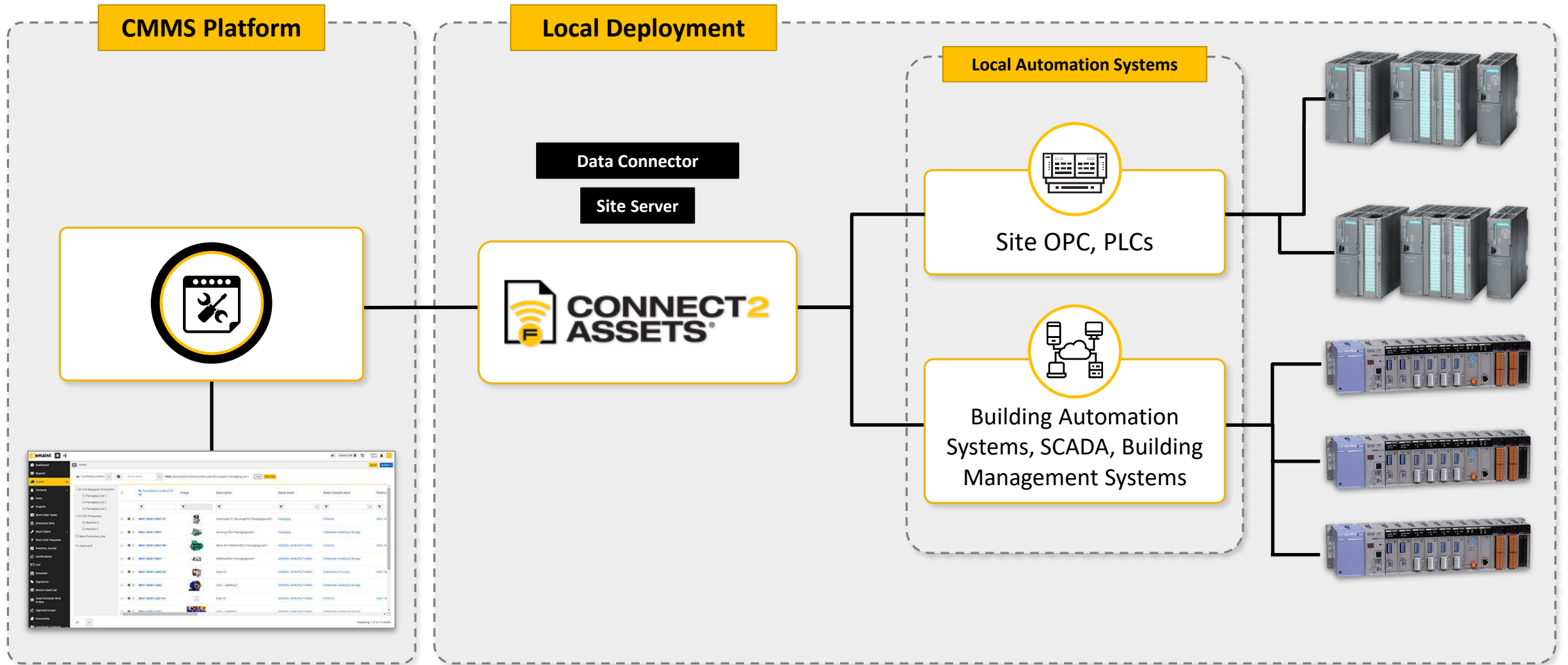
# Real-time visualization







# Connect2Assets



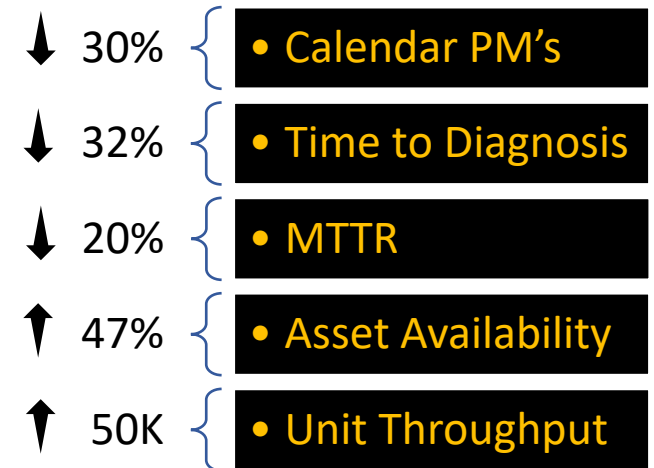
# True enterprise asset management (EAM)

## Reality of PLC/SCADA Data

- Virtually **100%** of companies have this data available
- Only **16%** of them have access to asset condition data in their EAM
- **70%** have no way to use this data to optimize maintenance activities

## Reality of Integrated CdM Projects

- Impact maintenance, HSE, operations, and sustainability
- Datatypes: cycle counts, runtime, gauge values, temp, etc.
- Supports both remote workers and on-site
- Optimize onsite resources



\*Fluke Reliability Solutions survey results

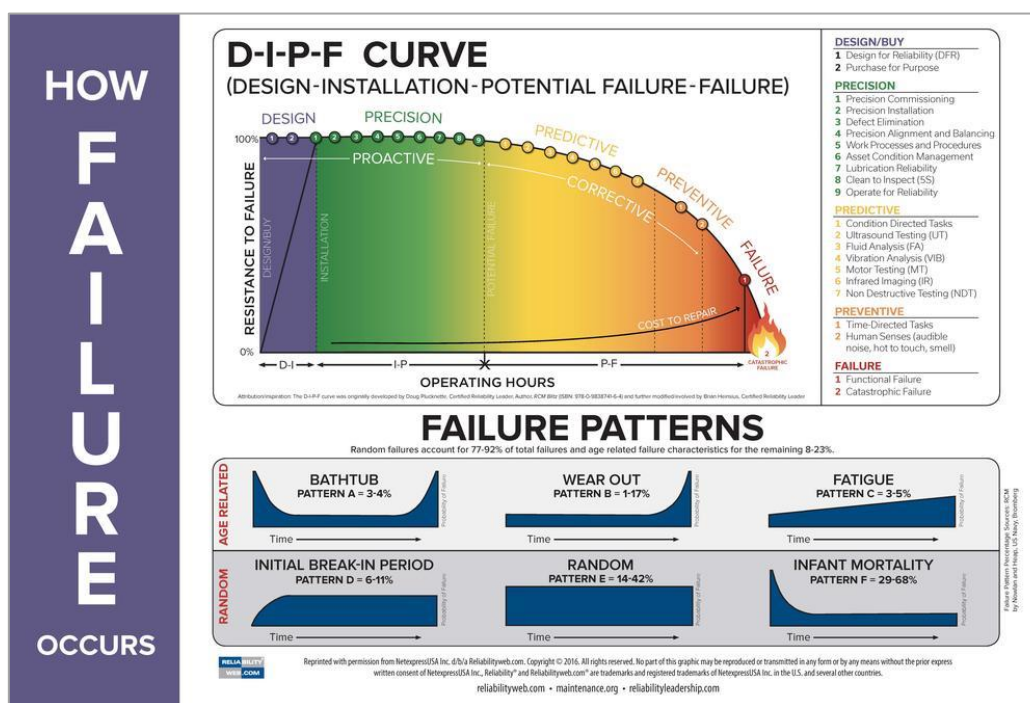
# Shifting the curve

In <10 Seconds CMMS customers can be notified of an asset event without the need for routes or the purchase of tools or sensors.

Manage rules-based exceptions such as: Threshold Measuring, Data Validation, Translation, Data Mapping, Session Management, and Notifications.

## Costs associated with failure:

- Downtime
- Backlog
- Express shipping
- Overtime
- Contract commitments

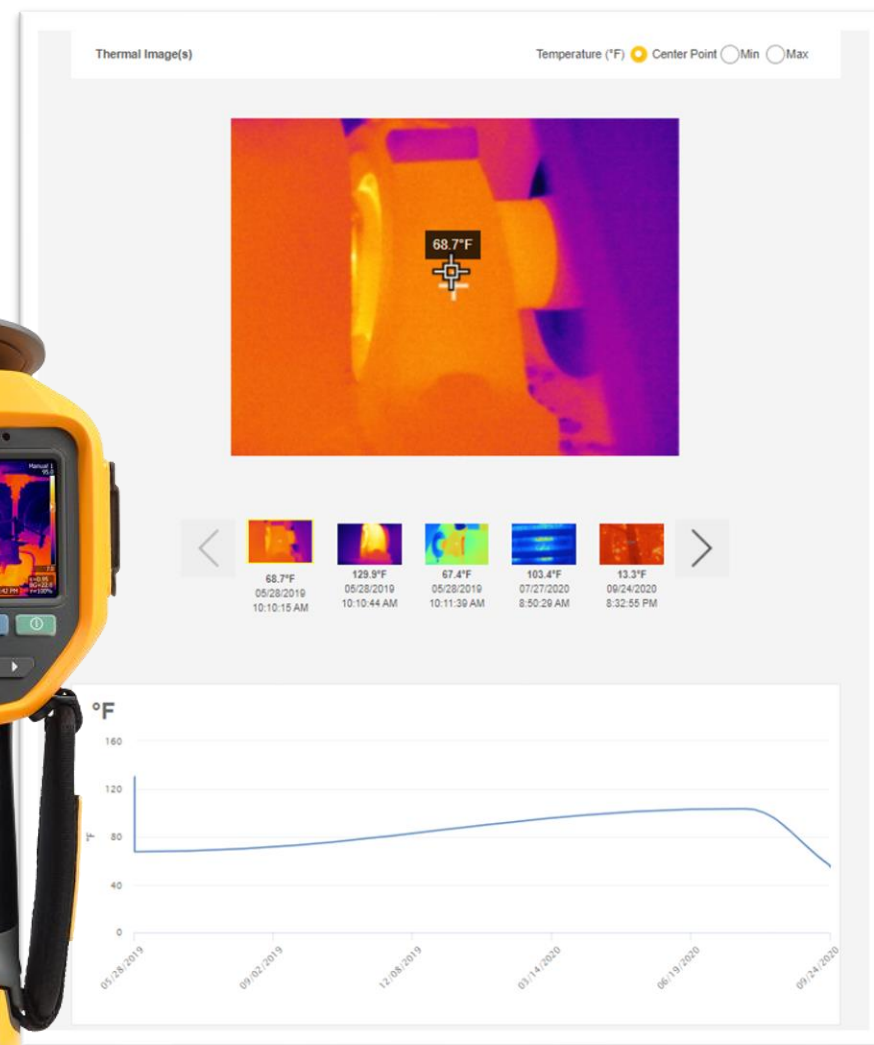
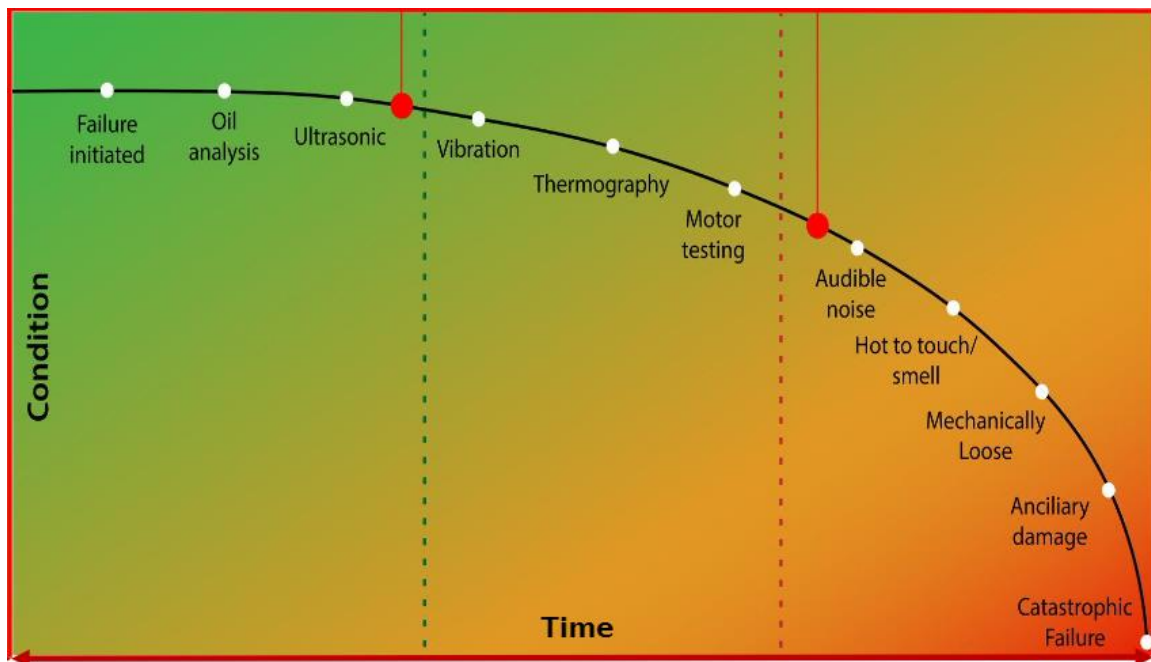






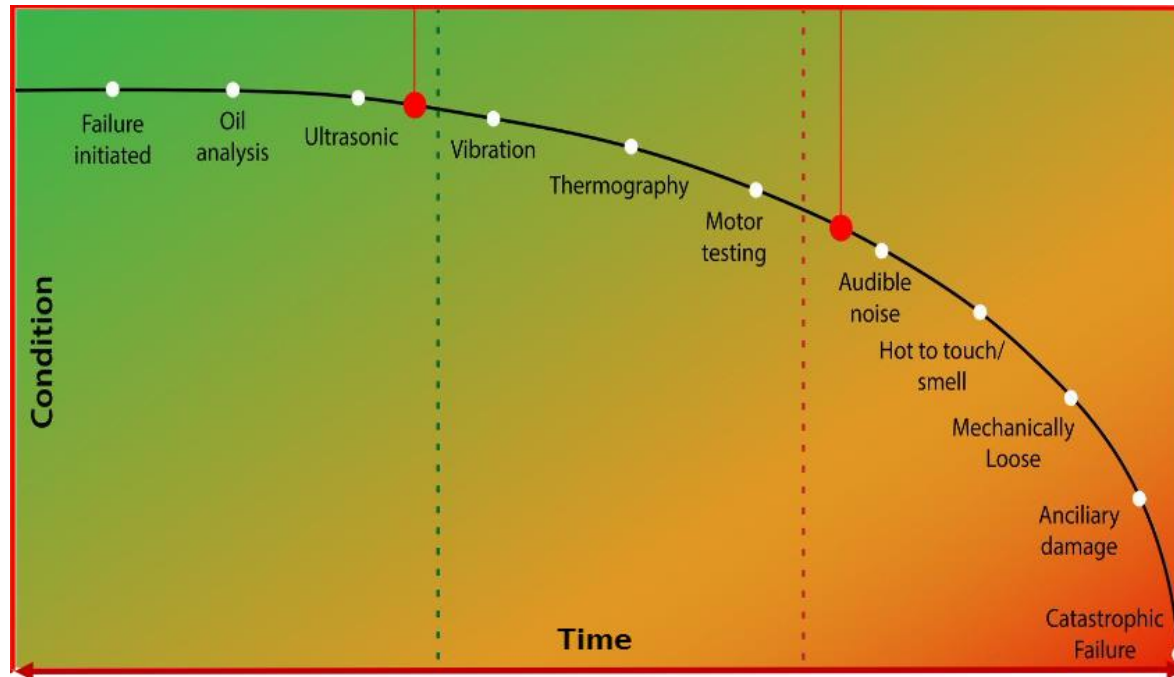
# Fluke thermal imagers

- Thermal images assign to asset records for trending
- Fluke Connect Desktop now includes SmartView



# Fluke Connect measurements

- Leveraging route-based measurements to understand the big picture



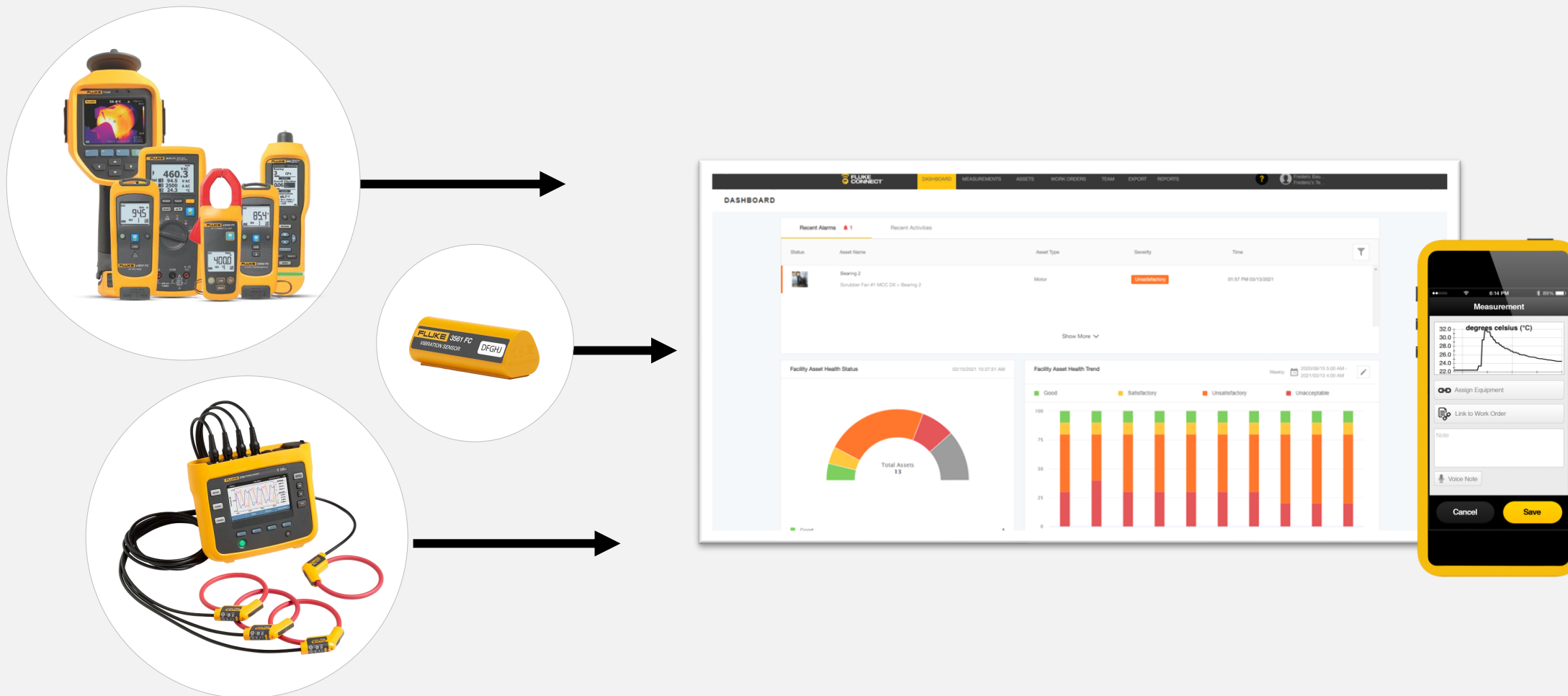
# Fluke Connect condition monitoring

- Condition monitoring gives you another set of eyes on your assets 24/7 365 days a year





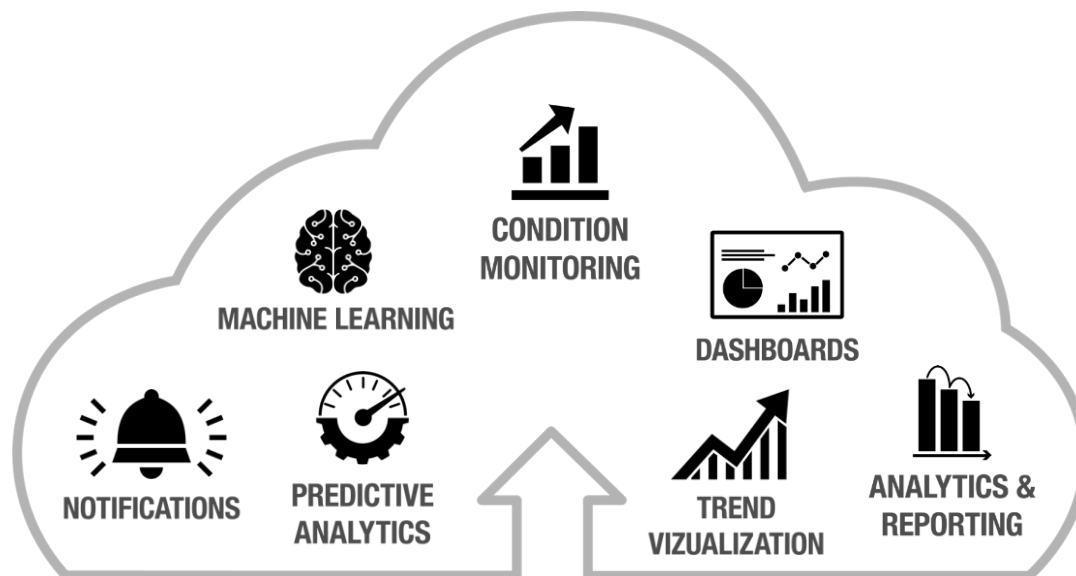
# All your data in one place





## Integrated CMMS

# Connected systems



***IIoT software platform supporting a suite of apps***



## Data Aggregation & SW Analytics

### Large, Clean, Contextual Data Lake:

- Sensor Data
- Machine Configuration Data
- Operational Data
- Other Contextual Data

### Interconnectivity with Other Enterprise Systems of Record:

- Computerized Maintenance Mgmt.
- Automation Control Systems
- Asset Performance Mgmt.
- ERP & EAM

### Analytics:

- General Analytical Engines & Pattern Recognition
- Domain-Specific Analytics
- Data Visualization & Dashboarding

# QUESTIONS?



Thank you!

**Michael Mills**

[Michael.Mills@fluke.com](mailto:Michael.Mills@fluke.com)

Sales Engineer, Fluke Reliability



# Next webinar: The exponential power of daily improvement

## BEST PRACTICE WEBINAR

Wednesday, April 7, 11 a.m. ET

### The exponential power of daily improvement

**Calvin Williams** has helped numerous companies build continuous improvement programs. In this webinar, he discusses the science behind daily improvement and how to use it to create a sustainable culture of continuous improvement.

He relates how a 1% improvement daily amounts to 38 times better results in one year. He'll also describe the power of habit and how it is formed or engineered through daily repetition, especially with a coach's guidance.



Calvin Williams

## To learn more about **Accelix** and our Webinar Series



### **SURVEY**

Please provide feedback on this webinar by responding to our survey. Do you want a Certificate of Attendance?



### **WEBINAR SERIES**

Visit this page to learn more about our Webinar Series:  
<https://www.accelix.com/community/best-practice-webinars/>



### **DEMO**

Visit Accelix.com for a free demo of our Connected Reliability Framework.



**FLUKE®**

**Reliability**

**THANK YOU!**

[www.fluke.com](http://www.fluke.com) ☎ 1-800-850-4608

[sales@accelix.com](mailto:sales@accelix.com)

**Accelix™**